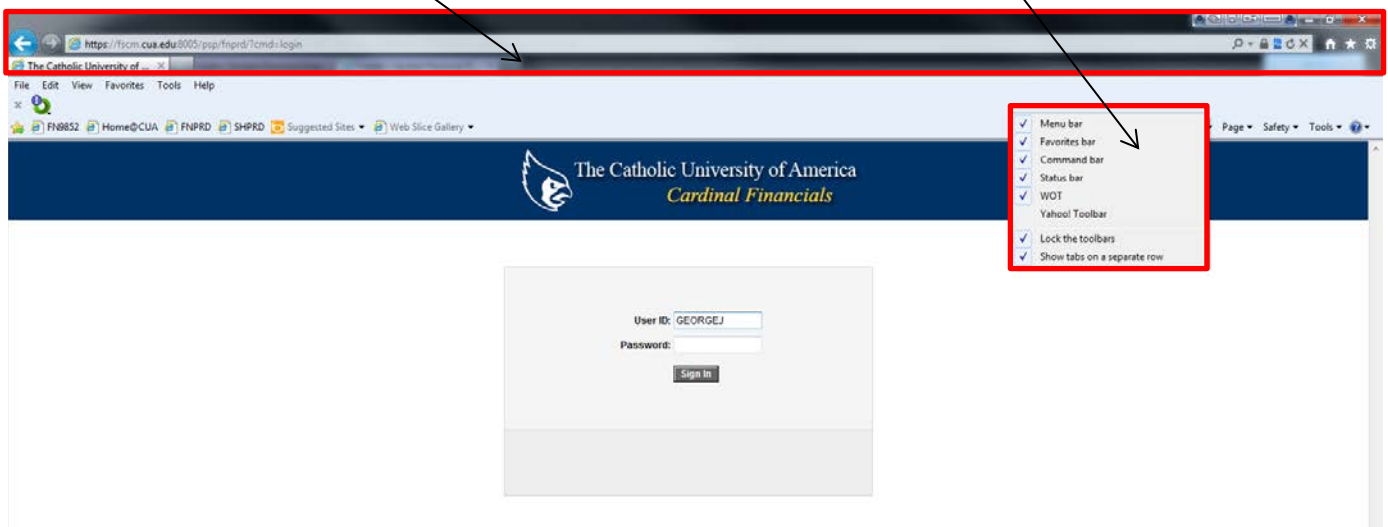


To resolve Internet Explorer related browser issues

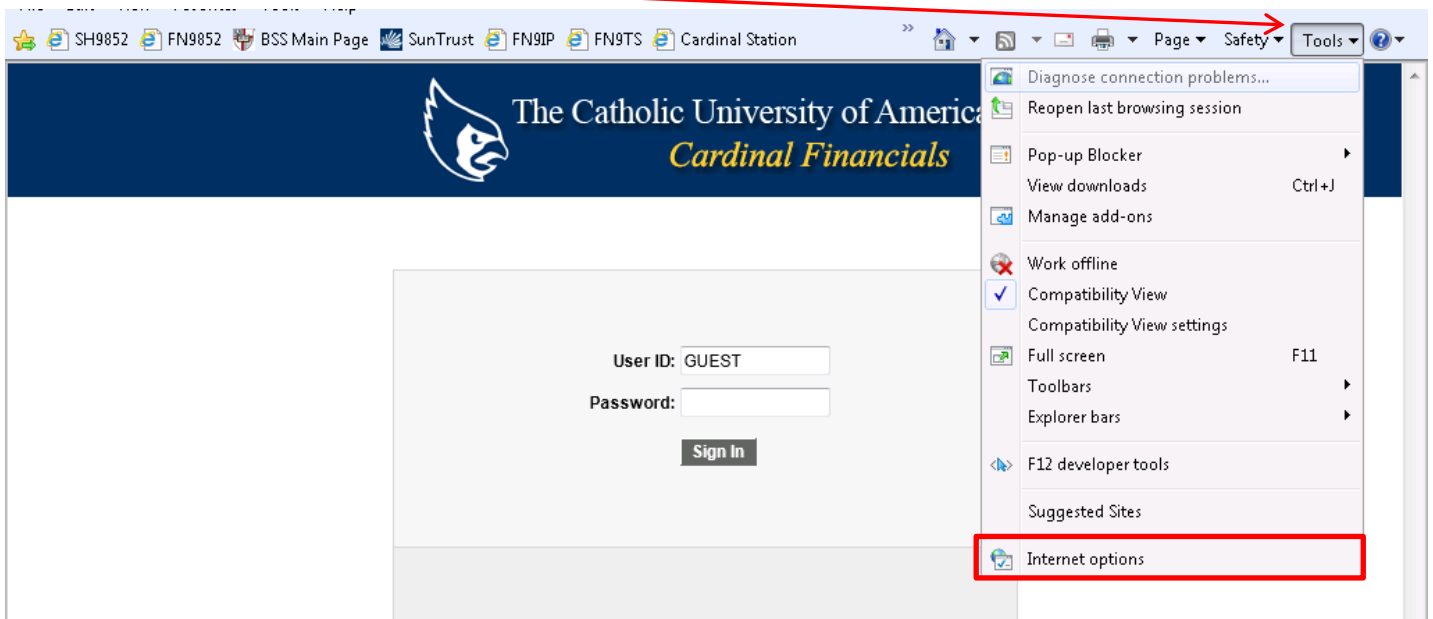
This document is specific to resolving **Internet Explorer** related browser issues that you face while using **Cardinal Station** and **Cardinal Financials**.

With the recent **Internet Explorer 9.0** upgrade, we don't see many of toolbars that we are used to seeing. i.e. Favorites, Menu, Status etc... To correct this, please do the following:

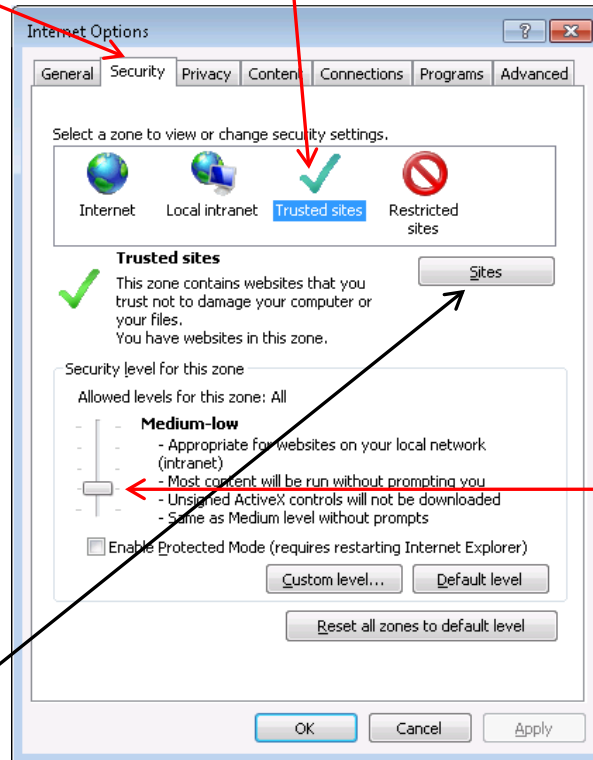
Right click on the blue shaded blank area. You'll see a menu that displays all the available toolbars. Choose the toolbars that you would like displayed by clicking to the left of the item. Any item that has a check mark indicates that the option is selected.



Click **Tools** and then click **Internet options**.

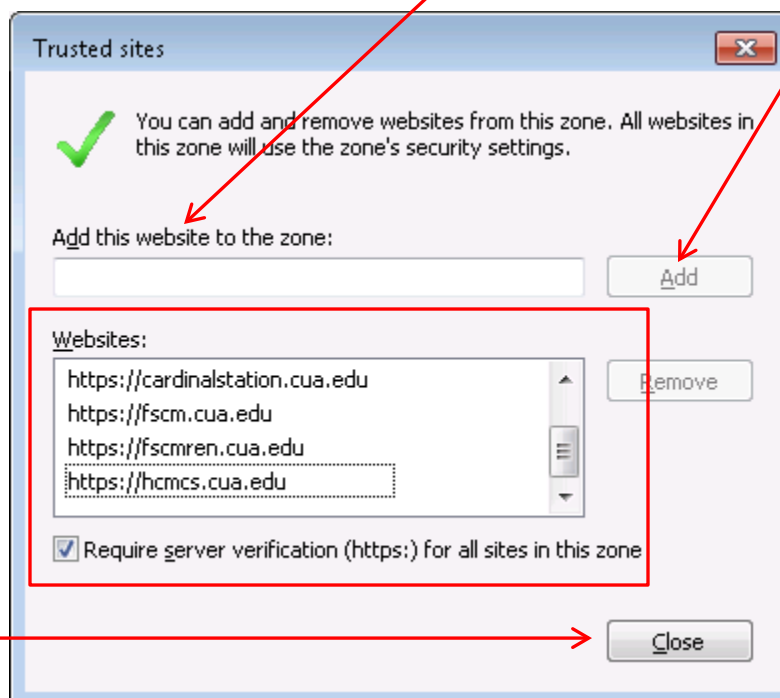


Click on the **Security** tab and then click on the green **Trusted Sites**. Then move the slider to **Medium-Low** position. If you are unable to see a slider, click on the button **Default Level**.

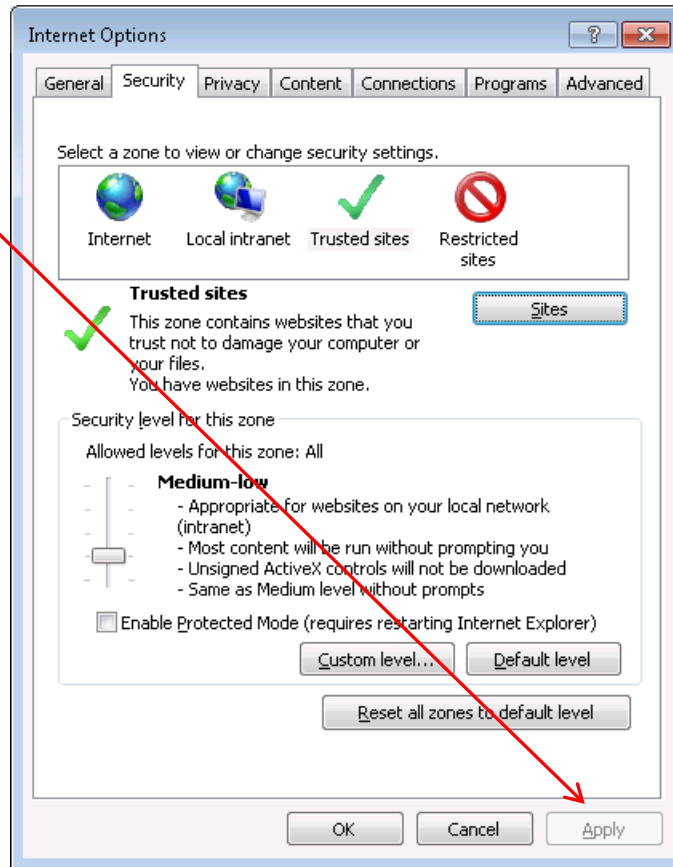


Then click on the **Sites** button. Ensure that <https://hcmcs.cua.edu> and <https://fscm.cua.edu> are on you Websites list. If they are not on the list, copy them from above and paste them in the **Add this website to the zone** and then click **Add**. It will then be added to the list of websites.

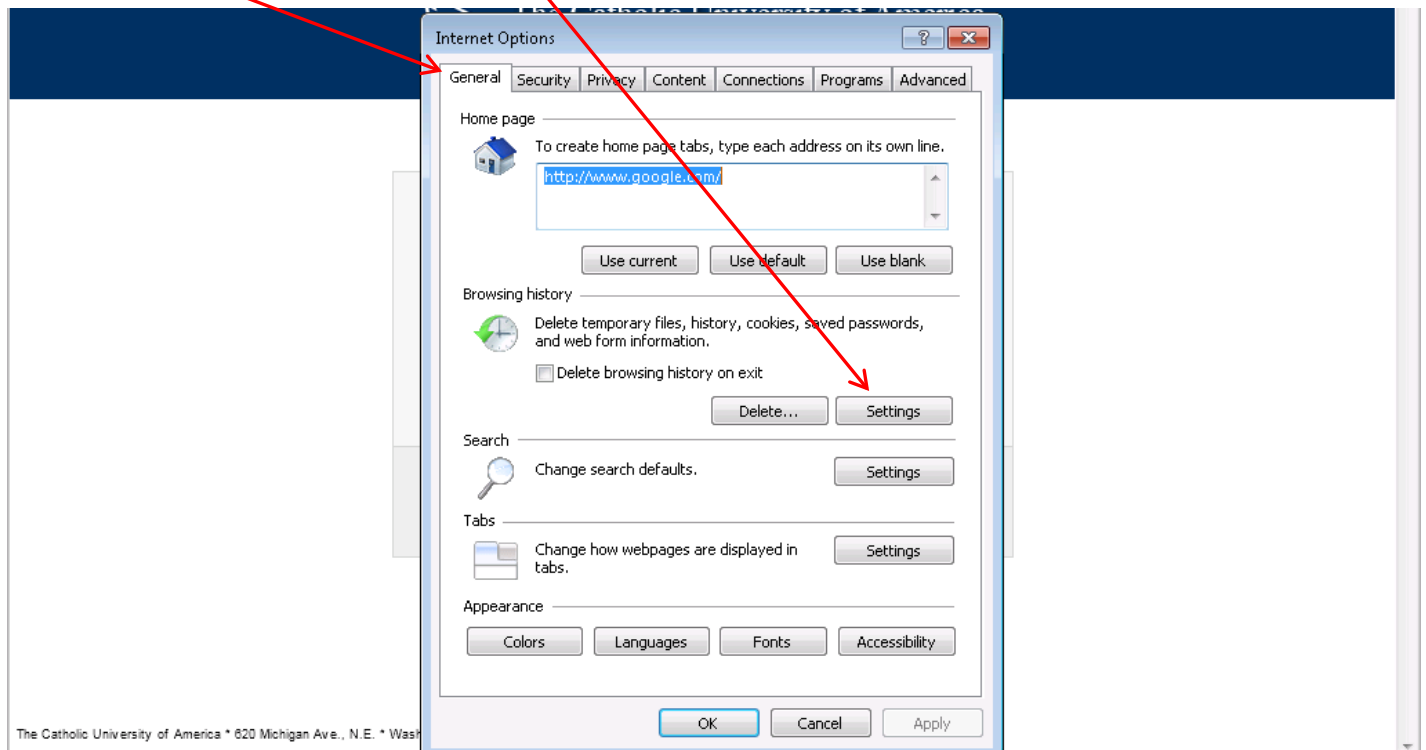
Then click **Close**.



Click **Apply** to apply these changes.

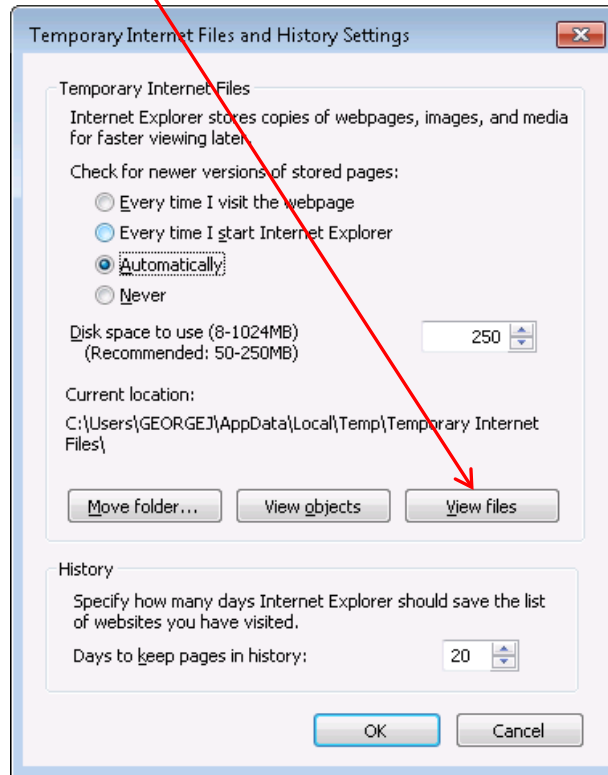


Click on the **General** tab and then click on **Setting**.

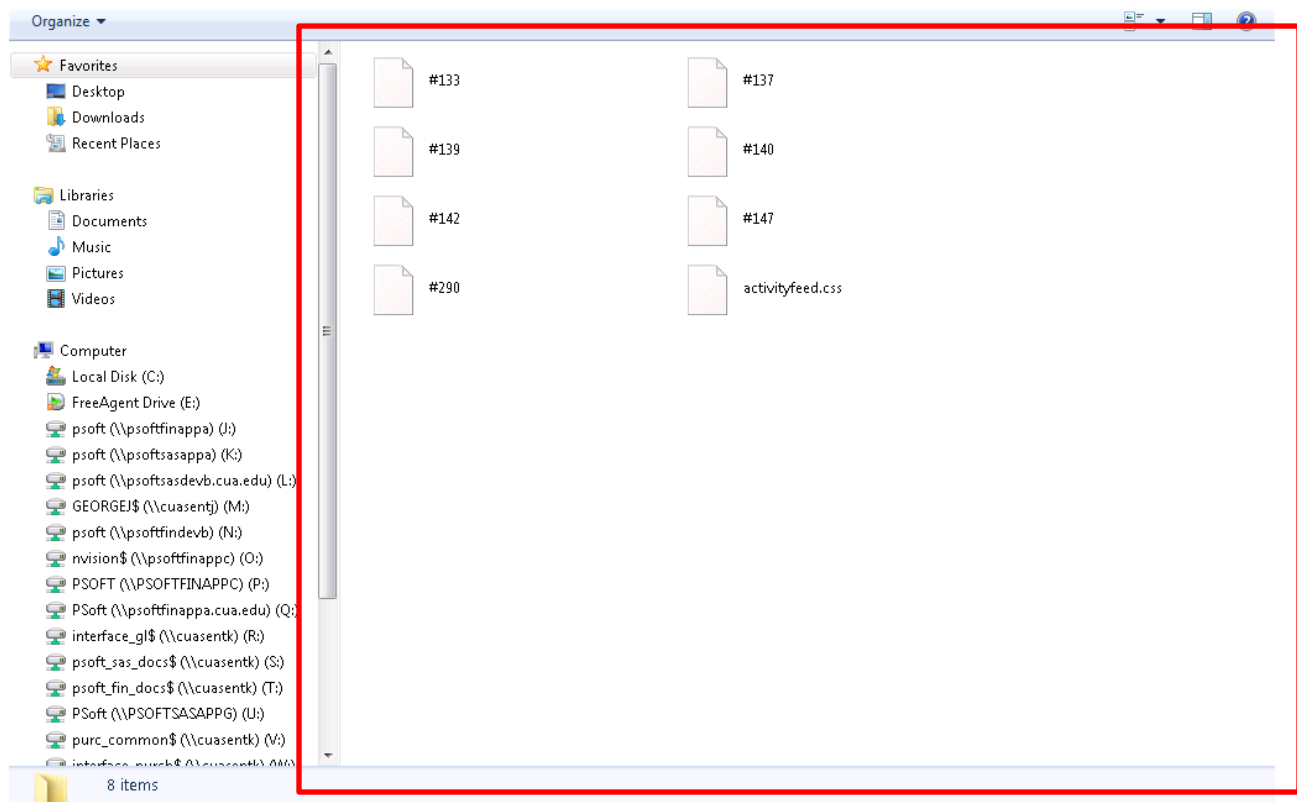




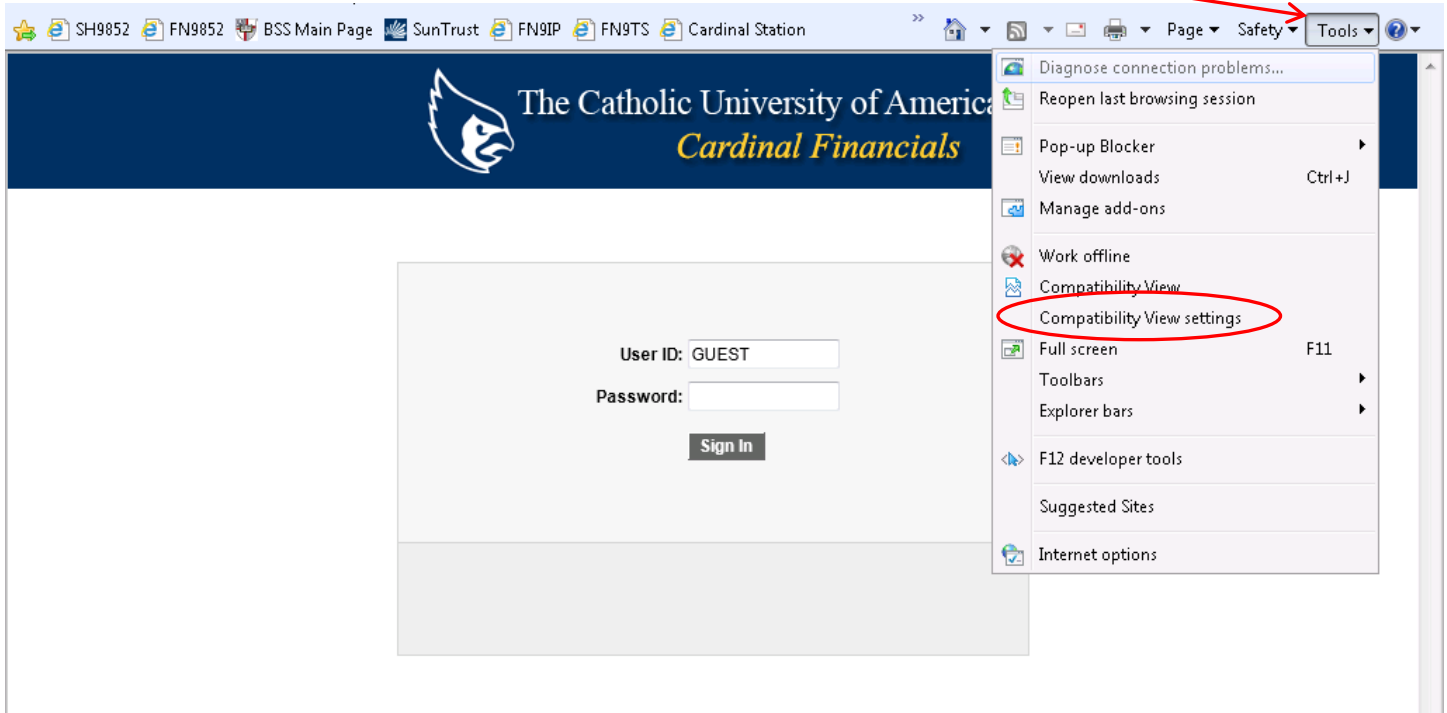
On the new window that opens, click on **View Files**.



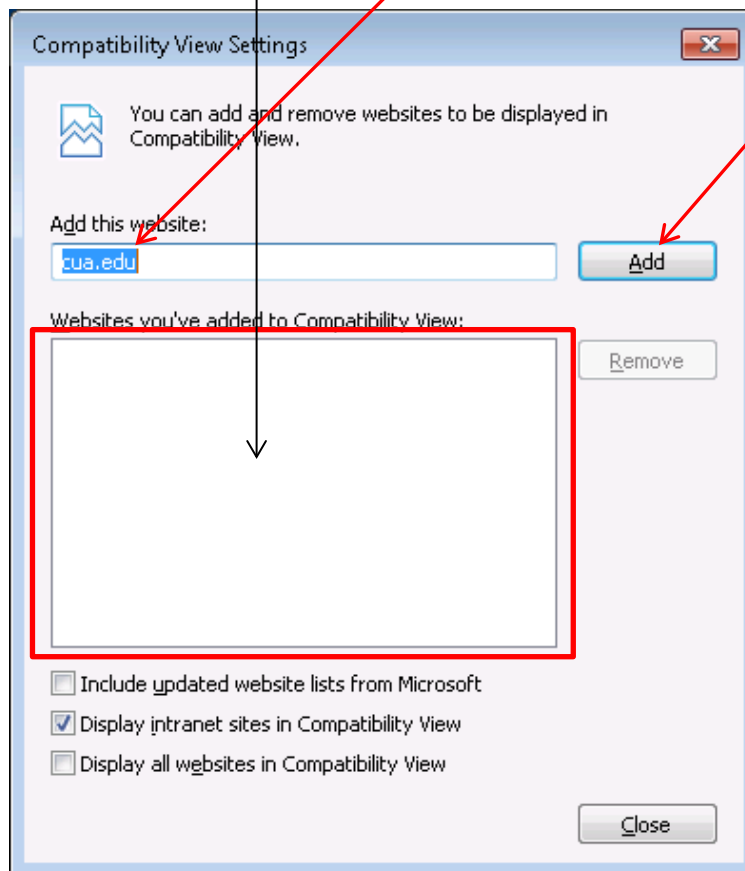
This action will open another window, where you should select all the files (**Ctrl + A** on your keyboard) in the area marked below and delete them. This clears your browsing history.



This step applies to users who are using **Internet Explorer 8 or later**. Click **Tools** and then click **Compatibility View Settings**.



You can skip this step if you see `cua.edu` in this area. If not, type `cua.edu` here and click **Add**. Then click **Close**.



This **Check** next to Compatibility View or the blue tinge on this **Icon** indicates that Compatability View is enabled.

